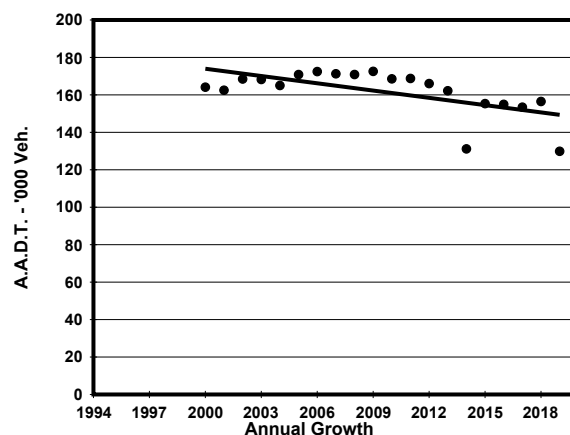
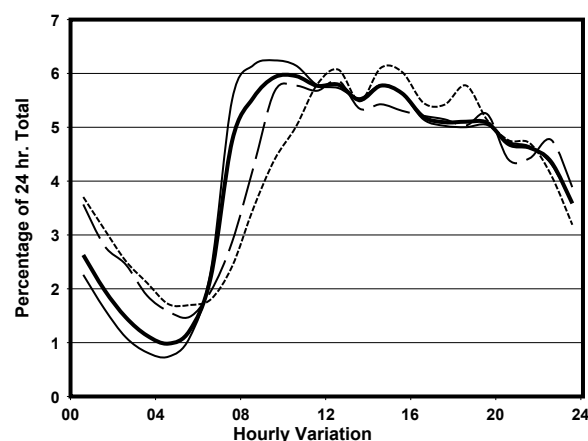
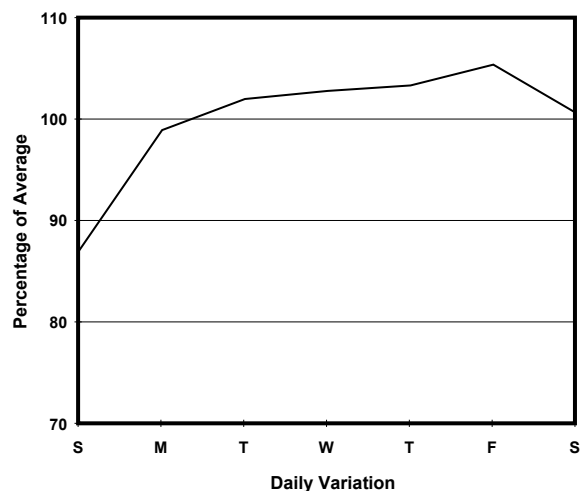
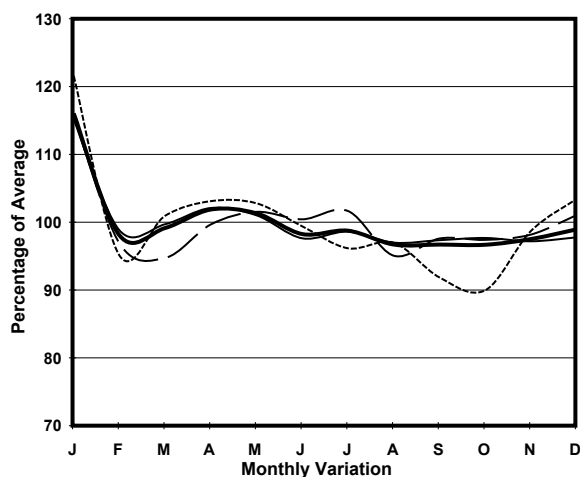


YEAR 2019
CORE STATION 1028
ROAD NETWORK MAJOR
ROAD TYPE URBAN TRUNK ROAD

LINK GLOUCESTER RD (from ARSENAL ST to CROSS HARBOUR TUNNEL S. INT)

6.5m 15.8m 2.8m 19m 5.3m
E bound 5 lanes W bound 5 lanes

1. TRAFFIC FLOW VARIATION AND GROWTH



— All day — Mon.- Fri. Sat. - - - - Sun.

2. TRAFFIC CHARACTERISTICS (BY DIRECTION)

Parameter	All - Day	Mon. - Fri.	Sat.	Sun.
EAST BOUND				
A.A.D.T.	59760	62190	58920	51440
R 12 / 24 - %	64.9	66.4	60.6	60.7
R 16 / 24 - %	84.5	86.3	79.4	79.4
AM Peak Hour	0900-1000	0900-1000	0900-1000	0900-1000
One-way flow at AM peak hour	3390	3700	3180	2210
T - % (AM)	-	-	-	-
PM Peak Hour	1600-1700	1600-1700	1700-1800	1600-1700
One-way flow at PM peak hour	3120	3230	2990	2890
T - % (PM)	-	-	-	-
Prop.of commercial vehicles - 16 hr.	-	-	-	-
WEST BOUND				
A.A.D.T.	70120	71920	72400	62320
R 12 / 24 - %	67	68.8	62.4	62.1
R 16 / 24 - %	85	86.6	81.2	80.8
AM Peak Hour	0900-1000	0800-0900	0900-1000	0900-1000
One-way flow at AM peak hour	4320	4710	4260	2800
T - % (AM)	-	-	-	-
PM Peak Hour	1800-1900	1600-1700	1600-1700	1800-1900
One-way flow at PM peak hour	3640	3670	3890	3710
T - % (PM)	-	-	-	-
Prop.of commercial vehicles - 16 hr.	-	-	-	-

3. OTHER INFORMATION AND COMMENT